



WEB600

Web-Based Monitoring and Alarm Notification



SENSAPHONE®
REMOTE MONITORING SOLUTIONS

The ALL NEW Sensaphone Web600

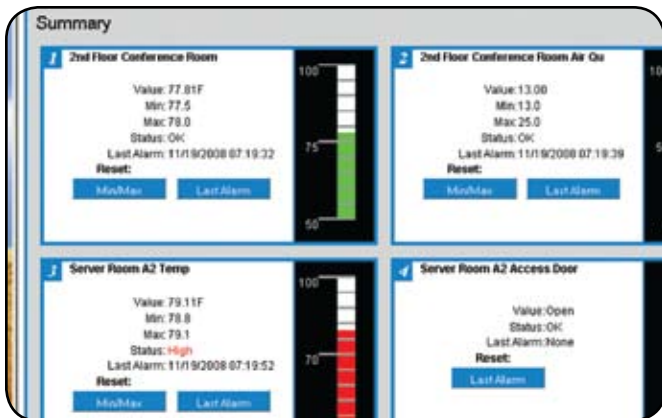
provides flexible web-based remote monitoring at an affordable price. Keep track of critical temperatures and other conditions and be notified immediately when current values exceed the normal range. Completely standalone and easy to use, the Web600 can be used for monitoring cold food storage, medical cold storage, and other temperature sensitive areas like computer rooms and data centers. In addition to temperature monitoring, the Web600 can also read values from humidity sensors, air quality sensors, water leak detection sensors and much more.





SENSOR INPUTS:

Connect up to six external sensors to monitor a variety of equipment and conditions. Each input zone can be connected to a temperature sensor, an analog transducer, or a dry contact switch.



WEB STATUS:

Live status and history is only a webpage away. The Web600 built in web server provides quick and easy information about your monitored conditions. Even time stamped history reports are readily available online.

ALARM NOTIFICATION:

When monitored conditions exceed normal values, the Web600 will notify you immediately by sending out e-mail alarm messages, and even text messages. Up to eight people can be contacted to make sure that proper action is taken.



OPTIONAL BATTERY BACKUP:

With the addition of the optional battery backup module, the Web600 can monitor for power failures and stay operational for two full hours while the power is out.

Input: Enabled Disabled
Input Name: 2nd Floor Conference Room
Input Type: Temp 28k F
Units:
Calibration: 0.0
Recognition Time: 00 Hours 00 Minutes 03 Seconds
Table Low: 0.0
Table High: 1.0
Alarm Delivery: Enabled Disabled
Alarm Low: 0.0
Alarm High: 100.0
Alarm Reset: Enabled Disabled
Alarm Reset Time: 00 Hours 00 Minutes 00 Seconds
Return to Normal: Enabled Disabled
Gauge Low: 50.0
Gauge High: 100.0
Alarm Delivery Schedule: [View/Edit](#)
Datalog Settings
Mode: Continuous While In Alarm Disabled
Normal Interval: 00 Hours 00 Minutes 00 Seconds
Alarm Interval: 00 Hours 00 Minutes 00 Seconds

WEB PROGRAMMING:

Built in web server for easy access to programming and status. Just point your browser to the Web600's webpage and fill in the blanks for a quick configuration.

SPECIFICATIONS

ALARM NOTIFICATION

METHODS:

- E-Mail, Text Messages, SNMP Traps
- 8 Alarm escalation levels
- Comprehensive scheduling per input, profile, and alarm destination

DESTINATIONS:

- 8 Programmable User Profiles
- 4 programmable alarm destinations per profile

COMMUNICATION TYPES:

- E-Mail – SMTP
- Text Messages
- Web page – Supported formats HTTP, PDA, WAP, and XML
- SNMP – MIB with Traps, GET, GETNEXT, and SET
- MODBUS®/TCP Slave Conformance Class 0 and 1

INPUTS:

- 6 Universal Inputs
 - Normally Closed / Normally Open Dry Contact
 - 2.8K / 10K Thermistor
 - 4-20mA Current Loop
- 12 Bit Resolution

DATA LOGGING

- 32,000 Samples (all samples include data date and time)
- 1 second to 1 month sampling rate
- User programmable channel selection
 - Zones 1 – 6
 - Battery
 - Input Power

COMMUNICATION PORTS:

- Ethernet 10/100Base-T

LOCAL INDICATORS:

- Alarm Status LED
- Power Status LED
- Ethernet link and Activity LEDs

POWER REQUIREMENTS:

- External transformer 120VAC 60Hz
- Optional Battery Backup Module (FGD-W610)
 - Provides 2` hours of backup

OPERATING CONDITIONS:

- 0-90% RH, non-condensing
- 0-50°C (32-122°F)

PHYSICAL PROPERTIES:

- 5.5" x 3.25" x 1.25"
- 0.5lbs

STANDARDS:

- FCC Part 15-B Compliant

ACCESSORIES

EXTERNAL BATTERY BACKUP MODULE:

Web600 Battery Backup.....FGD-W610



AVAILABLE SENSORS:

2.8K Temperature Sensor	FGD-0100
2.8K Weatherproof Temperature Sensor	FGD-0101
10K Weatherproof Temperature Sensor	FGD-0102
10K Indoor Decorator	FGD-0103
10K Immersion Temperature Sensor	FGD-0105
J Type Thermocouple/4-20mA	FGD-0220
Carbon Monoxide Sensor	FGD-0065
Air Quality Sensor	FGD-0066
Humidity 4-20mA Transmitter	FGD-0052
Spot Water Detector	FGD-0013
Zone Water Detector	FGD-0056
Magnetic Reed Switch	FGD-0006
Infa-Red Motion Detector	FGD-0007
Smoke Detector	FGD-0049

A complete accessory specification sheet is available for all supported sensors. Please visit www.sensaphone.com for more information.

Specifications subject to change without notice.

SENSAPHONE®
901 TRYENS ROAD
ASTON, PA 19014
PH: 610-558-2700
F: 610-558-0222
WWW.SENSAPHONE.COM

Distributed By:

Sentinel Power Inc.

922 Middletown Rd, New Stanton, PA 15672

Ph. (724) 925-8181 Fax (724) 925-1764

Toll Free (800) 784-7989 USA

www.sentinelpower.com