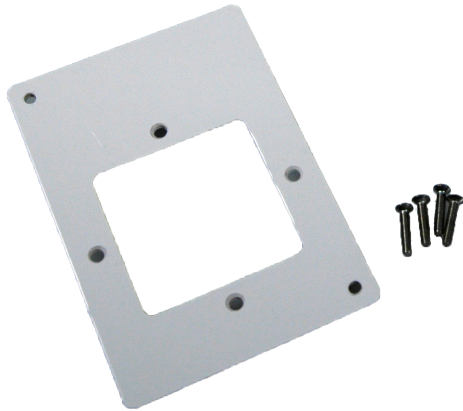


AA57



NOTICE

- This product is not intended for life or safety applications.
- Do not install this product in hazardous or classified locations.
- Read and understand the instructions before installing this product.
- Turn off all power supplying equipment before working on it.
- The installer is responsible for conformance to all applicable codes.

PRODUCT IDENTIFICATION

AA57 Wall mount adapter kit

OPERATION

Install the AA57 Adapter kit when mounting the PX series dry media differential pressure transducer to a European-style junction box.

AA57

European Wall Mount Adapter Kit for PX

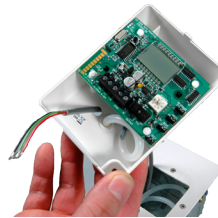
INSTALLATION



1. Insert tubing and wiring through back of junction box (junction box not included with AA57).



2. Attach adapter plate to junction box.



3. Run wiring into PX. Wire to terminals as shown in PX installation guide.



4. Thread screws through adapter plate and into wall.



5. Completed assembly.