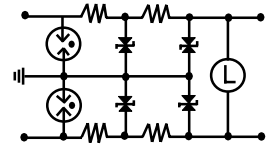


DLP-10/20/30E

Protects & Monitors Data Lines



The DLP-10/20/30E-Series are triple stage hybrid protectors that combine brute force primary protection with high speed silicon Avalanche diode stages for rigorous transient clamping.

The DLP-E Series guard mainframes, process controllers and other complex instrumentation from damage due to lightning and switching transients. It also monitors the signal presence on each data channel. You always know that your system is operational.

The DLP-E Series are hardwired and ready to be installed anywhere.



General Specifications

Duty	Heavy	6V protects RS-422, 423, 485, etc. 25V protects RS-232 62V protects CSU/DSU's 200V protects dial-up lines
Clamp Voltages	6,25,62, 200V-----	
Response Time	<1 nanosecond	
Attenuation	<1db at 10MHz	
I Peak	5000 Amps	
Series Rs	5 Ohms	
LED Monitors	1/2, 3/4, 5/6, 7/8 terminals	
Connection	6-32 screw terminals	
Mounting	DLP-10E 4.2" x 1.50" (.185 ID) DLP-20E 4.2" x 2.25" (.185 ID) DLP-30E 4.2" x 3.75" (.185 ID)	
UL	497A (Fuse), 497B	

Protection Application

Control and Instrumentation
PLC's
Process Control
Factory Instrumentation

Ordering Information

DLP-20E - 6V5
Series Resistance
Clamp Voltage
2 wire protector - DLP-10E
4 wire protector - DLP-20E
8 wire protector - DLP-30E

Note: Use Suffix F for Fusing.

Sentinel Power Inc.

922 Middletown Road, New Stanton, PA 15672, U.S.A.

Phone (724) 925-8181 Fax (724) 925-1764

1-800-784-7989

<http://www.sentinelpowerinc.com>

E-Mail: ken@sentinelpower.com